

CFIT-Flex™ Compact Universal Enclosure

Environmentally-protected enclosure designed for maximum flexibility and multiple fiber, copper or coaxial applications

Charles' new CFIT-Flex Series of universal enclosures were designed around the principal of "flexibility." These versatile enclosures may be wall, pole, strand or pedestal mounted and configured to meet a variety of fiber, copper or coaxial distribution applications. With a universal backplane and interchangeable feed and drop cable port plates, CFIT-Flex are especially efficient at meeting FTTX deployment challenges regardless of splicing technique, fiber type or the use of pre-connectorized cable.

The CFIT-Flex Compact is the first offering in this new series of non-metallic, universal enclosures. Constructed of lightweight and rugged polycarbonate, it provides long-life environmental protection. An optional swing-out 24-port fiber bulkhead provides technician-friendly access to feed and drop cables without disturbing existing subscriber connections. Internal cable management and bend radius controls maximize cable protection. Simple to install and secure, the CFIT-Flex Compact is truly a flexible enclosure designed to ensure lower total cost of ownership in all distribution network deployments.



CFIT-Flex with Universal Backplane for Mounting Fiber, Copper or Coaxial Equipment and Slack Cable



Closed View



Optional Swing-Out Fiber Bulkhead (shown with 24 fiber drops installed)

Applications



Garden Apartments



Low-Rise MDU



Mid-Rise MDU



High-Rise MDU



Cell Sites / FTTA



Strip Malls / FTTB



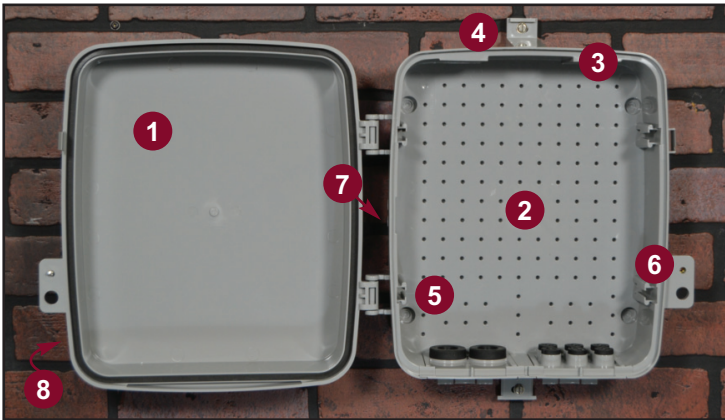
Campuses

**MADE IN THE
USA**

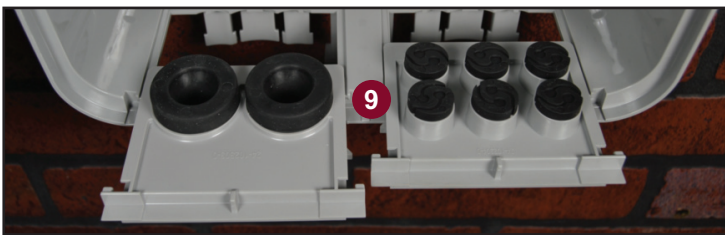
Charles
An Amphenol Company

CFIT-Flex™ Compact Product Features

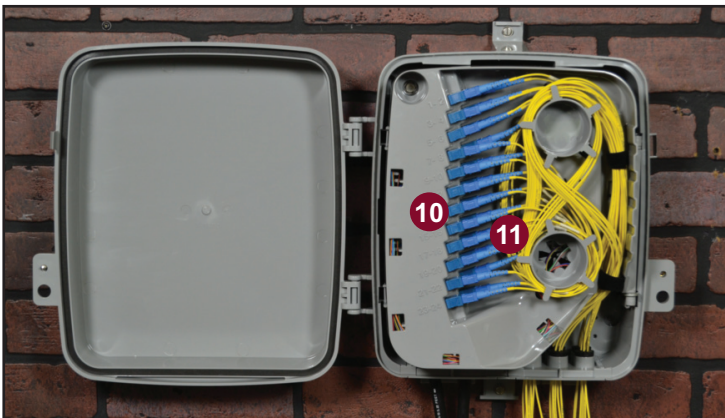
The CFIT-Flex Compact enclosure is designed to be flexibly configured to the unique requirements of any fiber optic, copper or coaxial distribution point of up to 24 subscribers. Much engineering consideration was given to creating interchangeable and easily removable parts that also maintain the integrity of the enclosure's environmental protection features and ensure optimal cable routing.



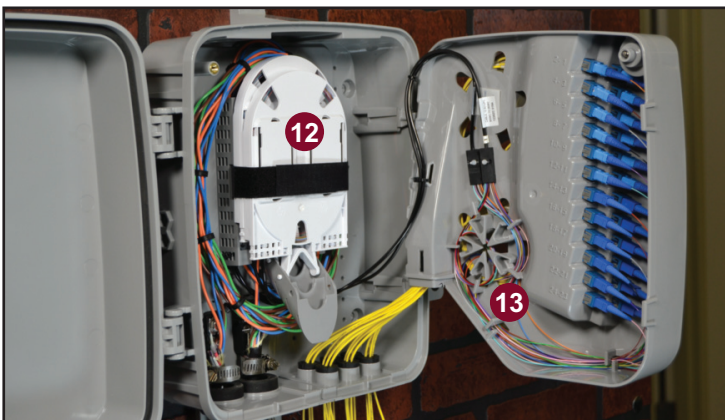
CFIT-Flex Compact Enclosure with Universal Backplane



Interchangeable Cable Port Plates & Variable Entry Grommets



Optional Swing-Out Fiber Bulkhead (Drop Side)



Optional Swing-Out Fiber Bulkhead (Feed Side)

- 1 Robust lightweight polycarbonate construction for indoor/outdoor use
- 2 Universal backplane provides ultimate flexibility to accommodate a broad range of applications
- 3 Top knockouts allow cable entry in indoor applications
- 4 Molded-in wall/pole mount brackets for bolting to wood, masonry, drywall
- 5 Snap pin hinges allow optional security door or fiber bulkhead to be easily removed without tools
- 6 216-tool lockable door with a padlock hasp for enhanced security
- 7 Provisioning for external ground
- 8 Custom front label options available
- 9 Interchangeable and removable bottom cable port plates with variable entry grommets maximize cable entrance/exit and support a wide variety of cable sizes while maintaining the enclosure's environmental protection integrity

Optional Swing-Out Fiber Bulkhead

- 10 Swing-out 24-port fiber bulkhead provides easy access to feed and drop cable as well as bend radius control and strain relief
- 11 Bulkhead accommodates SC or LC adapters
- 12 Backplane accommodates up to three small hinged splice trays and cable attachments for convenient fiber splicing
- 13 Efficient internal cable management and routing with multiple tie-down locations

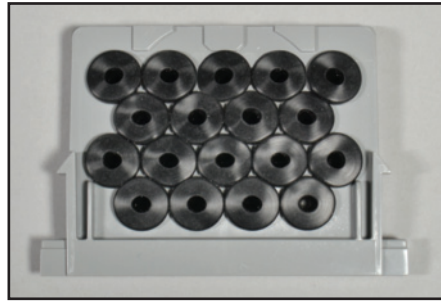
Product Specifications

Dimensions:	15"H x 12"W x 5.5"D (38cm x 30.5cm x 14cm)
Construction:	Rugged UL94-5VA Gray Polycarbonate
Weight:	4 lbs. (1.81kg) empty enclosure only
Supported Fiber Connector Types:	SC, LC or MPO
Compliance:	Designed to meet GR-950, GR-2898

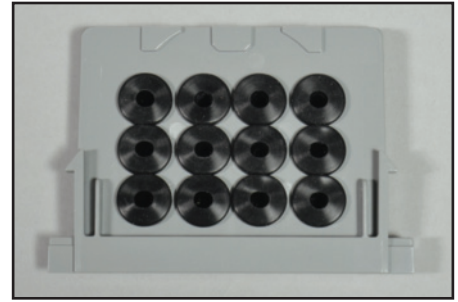
CFIT-Flex™ Compact Interchangeable Port Plates

Each CFIT-Flex Compact enclosure features two bottom cable port locations (left and right). Each location may be equipped with any combination of the interchangeable and removable port plates types shown here.

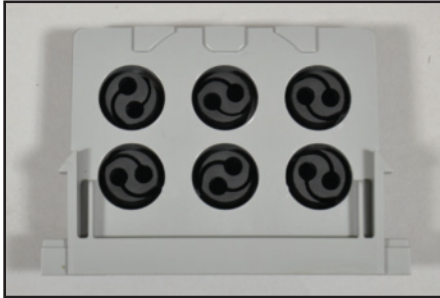
Custom port plate configurations are available, please call for details.



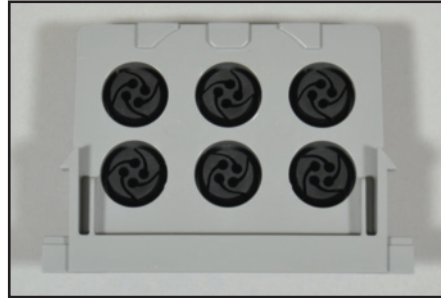
Eighteen (18) 5mm Grommets
#CFIT-FC-18G5P



Twelve (12) 5mm Grommets
#CFIT-FC-12G5P



Six (6) Dual 5mm Grommets
#CFIT-FC-62G5P



Six (6) Quad 2mm/3mm Grommets
#CFIT-FC-64G2P



Blank Face Plate
#CFIT-FC-BLNKP



Two (2) 0.75" Grommets
#CFIT-FC-SDGRP



One (1) 1.00" Grommet
#CFIT-FC-MSGRP



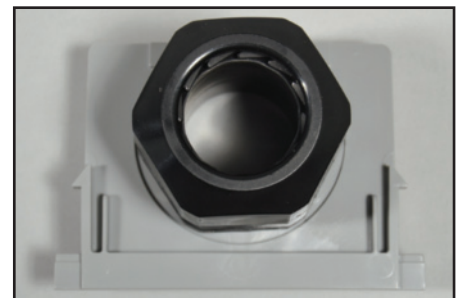
One (1) 1.25" Grommet
#CFIT-FC-LSGRP



Two (2) 0.75" Cordgrips
#CFIT-FC-SDCGP



One (1) 1.00" Cordgrip
#CFIT-FC-MSCGP



One (1) 1.25" Cordgrip
#CFIT-FC-LSCGP



Two (2) 0.75" Conduit Fittings
#CFIT-FC-SDCTP



One (1) 1.00" Conduit Fitting
#CFIT-FC-MSCTP



One (1) 1.25" Conduit Fitting
#CFIT-FC-LSCTP

CFIT-Flex™ Compact Ordering Information

Standard Product

PART NUMBER	DESCRIPTION
CFIT-FC24A2KK01	CFIT-Flex Compact, 24 Ports, SC/APC, 2 Splice Trays, Dual .75" Grommets L/R, Swing-Out Bulkhead
CFIT-FC24B2KK01	CFIT-Flex Compact, 24 Ports, SC/UPC, 2 Splice Trays, Dual .75" Grommets L/R, Swing-Out Bulkhead
CFIT-FC24C2KK01	CFIT-Flex Compact, 24 Ports, LC/APC, 2 Splice Trays, Dual .75" Grommets L/R, Swing-Out Bulkhead
CFIT-FC24D2KK01	CFIT-Flex Compact, 24 Ports, LC/UPC, 2 Splice Trays, Dual .75" Grommets L/R, Swing-Out Bulkhead

Custom Configurations

CFIT		-	FC		(1) Ports Capacity	(2) Adapter Type	(3) Splice Baskets / Trays	(4) Port Plate #1 (Left) Style	(5) Port Plate #2 (Right) Style	(6) Options / Custom Configurations
00	No Fiber Ports	A	SC / APC	0	None	A	Dual Small 0.75" Cordgrips	00	None	
06	6 Fiber Ports	B	SC / UPC	1	(1) Std. Splice Basket Plate, (1) Small Hinged Splice Tray, (1) Cable Bracket	B	Single Medium 1.00" Cordgrip	01	(1) Std. Swing-Out Bulkhead	
08	8 Fiber Ports	C	LC / APC	2	(1) Std. Splice Basket Plate, (2) Small Hinged Splice Trays, (1) Cable Bracket	C	Single Large 1.25" Cordgrip (up to 24 5mm dia. cables)	02	(1) Std. Swing-Out Bulkhead, Ground Stud	
12	12 Fiber Ports	D	LC / UPC	3	(1) Std. Splice Basket Plate, (3) Small Hinged Splice Trays, (1) Cable Bracket	D	6 Quad Grommets (2mm/3mm dia. cables)	03	(1) Std. Swing-Out Bulkhead, Dual Ground Studs	
16	16 Fiber Ports	X	None	4	(1) Std. Splice Basket Plate, (1) Small Hinged Splice Tray, (2) Cable Brackets	E	6 Dual Grommets (5mm dia. cables)	F1	(1) 12 Fiber Loose Tube 3 Meter Fanout, (1) Std. Swing-Out Bulkhead	
24	24 Fiber Ports			5	(1) Std. Splice Basket Plate, (2) Small Hinged Splice Tray, (2) Cable Brackets	F	12 Grommets (5mm dia. cables)	F2	(2) 12 Fiber Loose Tube 3 Meter Fanout, (1) Std. Swing-Out Bulkhead	
				6	(1) Std. Splice Basket Plate, (3) Small Hinged Splice Tray, (2) Cable Brackets	H	18 Grommets (5mm dia. cables)	F3	(1) 12 Fiber Loose Tube 3 Meter Fanout, (1) Std. Swing-Out Bulkhead, Ground Stud	
				7	(1) Std. splice Basket Plate (0) Small Hinged Splice Trays* (2) Cable Brackets	J	Blank Cover Plate	F4	(2) 12 Fiber Loose Tube 3 Meter Fanout, (1) Std. Swing-Out Bulkhead, Dual Ground Studs	
				8	(1) Std. splice Basket Plate (0) Small Hinged Splice Trays** (2) Cable Brackets	K	Dual Small 0.75" Grommets	M1	(1) MPO/MPT Connector/Bracket, (1) Std. Swing-Out Bulkhead	
						L	Single Medium 1.00" Grommet	R1	(1) 12 Fiber Ribbon 3 Meter Fanout, (1) Std. Swing-Out Bulkhead	
						M	Single Large 1.25" Grommet	R2	(2) 12 Fiber Ribbon 3 Meter Fanout, (1) Std. Swing-Out Bulkhead	
						N	Dual Small 0.75" Conduit Fittings	R3	(1) 12 Fiber Ribbon 3 Meter Fanout, (1) Std. Swing-Out Bulkhead, Ground Stud	
						P	Single Medium 1.00" Conduit Fitting	R4	(2) 12 Fiber Ribbon 3 Meter Fanout, (1) Std. Swing-Out Bulkhead, Dual Ground Studs	
						R	Single Large 1.25" Conduit Fitting			

* Does not include splice tray holder for a patch-only application
** Does include splice tray holder for a patch & splice application where splice trays are added later

Please call (847) 806-6300 for availability of custom configurations, identification labels, and other CFIT-Flex options.

Example Configuration:

PART NUMBER:	CFIT-FC24A2BD01
DESCRIPTION:	CFIT-Flex Compact Enclosure, (1) 24 port swing-out bulkhead - SC/APC, (1) splice basket, (2) small hinged splice trays, (1) cable attachment bracket, (1) single medium 1.00" cordgrip port plate, (1) six quad grommets (2mm/3mm) port plate

www.charlesindustries.com

Charles Industries, LLC
An Amphenol Company

Voice: (847) 806-6300

Fax: (847) 806-6231

E-mail: mktsserv@charlesindustries.com

INNOVATIVE ENCLOSED SOLUTIONS™



Charles is a registered trademark of Charles Industries, LLC

D-OSP155-K19